

REDESIGNING EDUCATION TO RESTORE SOCIAL MOBILITY

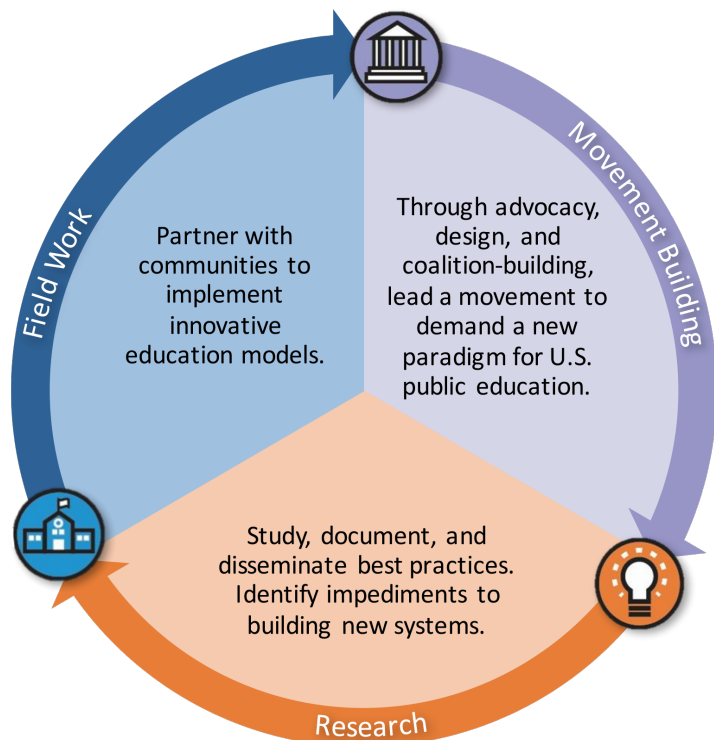
HARVARD GRADUATE SCHOOL OF EDUCATION | EDUCATION REDESIGN LAB

THE EDUCATION REDESIGN LAB SEEKS to directly address the most conspicuous shortcoming of traditional school reform: the failure to break the iron-law correlation between socio-economic status and education outcomes.

In order to overcome widespread inequity in supports, opportunities, and outcomes for children, the Lab is focused on redesigning, aligning, and integrating systems of child development and education. Instead of silver bullet solutions, the Lab calls for a comprehensive system of developmental supports that tightly links early childhood education, health, and summer and after-school opportunities with the K-12 education system in local communities. To advance this new vision for education, the Education Redesign Lab focuses on three core strategies:

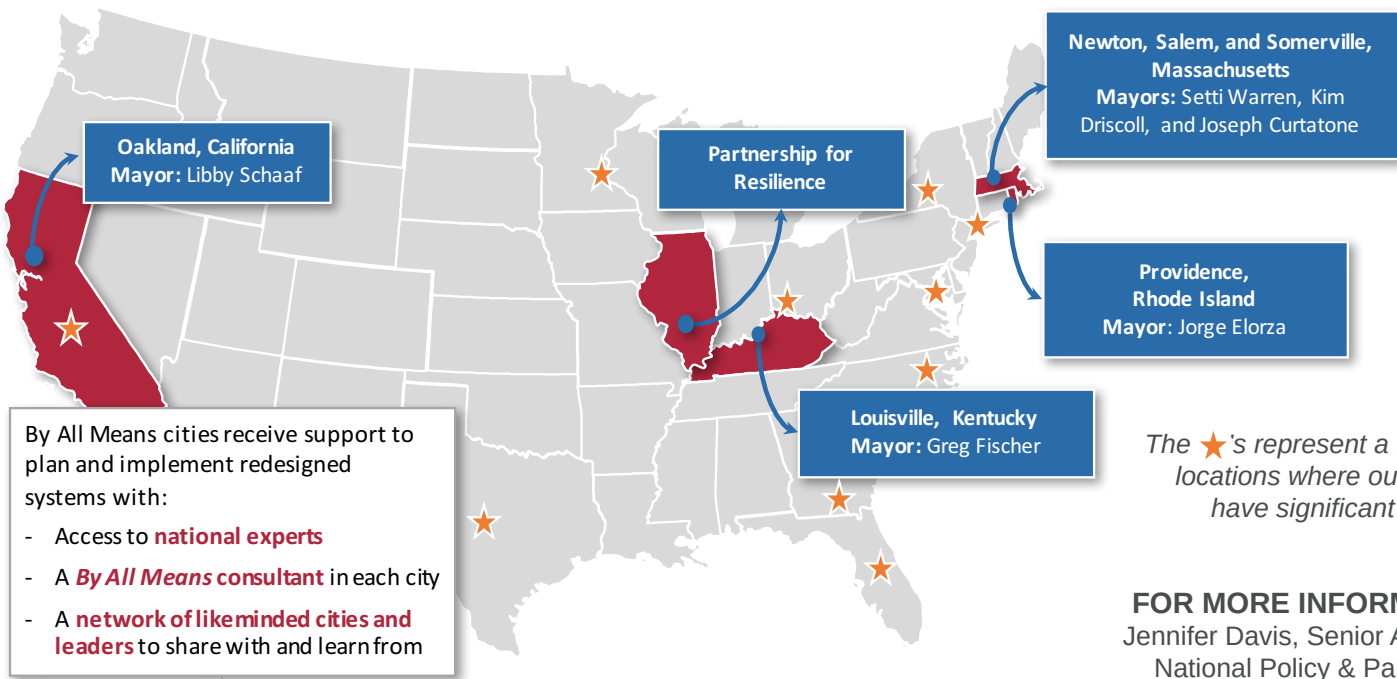
- **Field Work:** supporting mayors, Children's Cabinets, and grassroots community members to accelerate the implementation of effective practices at scale;
- **Research:** documenting and disseminating successful examples of integrated city systems that result in stronger child outcomes, while highlighting the enablers for—and barriers to—success;
- **Movement Building:** working with respected national partners as well as through the media and national speaking engagements, the Lab advances a new vision for education and identifies and develops strategies to address policy barriers and opportunities to reaching that vision.

The Education Redesign Lab was founded in 2014 by Paul Reville, former Secretary of Education for the Commonwealth of Massachusetts and Francis Keppel Professor of Practice of Educational Policy and Administration at the Harvard Graduate School of Education.



FIELD WORK

The Lab's **By All Means** initiative is addressing the iron law correlation between socioeconomic status and education outcomes by partnering with visionary mayors and superintendents from Louisville, KY; Oakland, CA; Providence, RI; and Salem, Somerville, and Newton, MA. Each city has created a Children's Cabinet—a cross-sector team made up of mayors, superintendents, health and human services directors, and community and civic leaders—to embark on a redesign process that is focused on creating integrated systems of opportunity and support from early childhood through higher education. With support from the Lab, each cabinet has designed its own ambitious agenda with system-transforming initiatives



FOR MORE INFORMATION:
Jennifer Davis, Senior Associate,
National Policy & Partnerships
jennifer_davis@gse.harvard.edu
617-496-7046 | edredesign.org

that are expanding services and improving outcomes for children. The Harvard Graduate School of Education hosts the cabinets for 5 two-day retreats over two-and-a-half years, bringing leaders to Cambridge to learn from national experts, Harvard faculty, and from each other.

Additionally, through the **Partnership for Resilience**, the Lab has helped accelerate collaboration between the Illinois Education Association and the Illinois chapter of the American Academy of Pediatrics. Through our work with the Partnership for Resilience, we are learning what it takes to successfully bring together education, health, and civic leaders to jointly address challenges in rural communities.

RESEARCH

The Lab conducts actionable research that clarifies the necessary components of redesigned education systems and documents and disseminates practical steps to scale them. The Lab is currently developing case studies on the six By All Means cities and the new initiatives and systems they are putting in place to better serve children. Additionally, the Lab conducts research on promising practices in programs and communities all across the country. Our research will not only highlight effective practices and their enabling conditions, but will call attention to policy, practical, and financial impediments that prevent scaling of best practices. We will develop toolkits and roadmaps for other cities to use as they embark on systems-building, silo-breaking work.

MOVEMENT BUILDING

Through our work with national, state, and local policy and opinion leaders and a partnership with those in the field engaged in this work, we hope to re-focus our national school reform agenda on building the personalized systems of opportunities and supports necessary to prepare all children to be successful. At the Lab we work to promote our holistic vision—in collaboration with key partners—through strategic communications, capacity building, and advocacy on critical state and local policies. The Lab recently hosted a national meeting of all the major organizations engaged in this cross-sector, integrated work. The meeting made the case for seizing the moment of opportunity for this work. We explored areas of common interest and need, including: shaping a Children’s Opportunity Agenda, enhancing leadership development (for on-the-ground leaders), changing state and local policy, and conducting research. In this way, we seek to build a movement for changing the design of U.S. public education.

SUPPORT

A gift to the Education Redesign Lab at Harvard supports our ability to have a broader impact on the lives of children. A contribution would help implement the Lab’s new four-year business plan, which was completed with the assistance of The Bridgespan Group.